

The **HST-T5030A** easily accommodates the inspection of hand baggage and parcels.

General Specification

- Tunnel Size: 500(W)*300(H)mm
- Conveyor Speed: 0.22m/s
- Conveyor Max Load: 20kg
- Dose per Inspection: <2.9 μ Gy/h
- Resolution: <0.101mm Metal Wire
- Penetration: 6mm to 8mm Steel
- Film Safety: Guarantee ISO1600 Film
- X-ray Leakage: <0.05 μ Gy/h (at a distance of 5cm From external housing)

X-ray Generator

- Generate direct: Upward
- Generate angle: 60 degree
- Anode Voltage: 80Kv
- Anode power: 0.4 to 0.5mA
- Cooling / Duty Cycle: Oil Cooling /100%

Image System

- X-ray Sensor: L-Shaped Photodiode Array (monoenergetic) , 12bit Deep
- Monitor: High Resolution Color, LCD Accord, 17 inch
- Image Processing: Edge enhancement, image strengthening, image lightening,, reducing darkening, image returning, image retrieval.
- Image Grey Level: 4096
- Image Max Resolution: 1024 * 1280 pixel
- Image Processing: 24bit for processing real time
- Image storage: Storage 60000 pictures in real



time

- Zoom: 2,4,8,16 Times Enlarge, Whole screen continuous observation

Installation Data

- Operation temperature/Humidity: 0°C-45°C /20%-95%(non-condensing)
- Storage Temperature/Humidity: -20°C-60°C /20%-95%(non-condensing)
- Operation Power: 220VAC(\pm 10%)50 \pm 3Hz
- Power Consumption: 1.0 KW (max), 0.3KW(working)
- Noise: <65db

The **HST-T5030C** Typical Steel penetration 32mm

General Specification

- Tunnel Size: 500(W)*300(H)mm
- Conveyor Speed: 0.22m/s
- Conveyor Max Load: 20kg
- Dose per Inspection: <2.9μGy/h
- Resolution: 34AWG to 40AWG
- Spatial resolution: Level: dia1.0mm, Vertical: dia1.3mm
- Penetrate resolution: 24AWG to 34AWG
- Penetration: 30mm to 40mm Steel
- Film Safety: Guarantee ISO1600 Film
- X-ray Leakage: <0.05 μGy/h (at a distance of 5cm From external housing)

X-ray Generator

- Generate direct: Upward
- Generate angle: 80 degree
- Anode Voltage: 100~160Kv
- Anode power: 0.4 to 1.2mA
- Cooling / Duty Cycle: Oil Cooling /100%

Image System

- X-ray Sensor: L-Shaped Photodiode Array (multi-energetic) , 12bit Deep
 - Monitor: High Resolution Color, LCD Accord, 17 inch
 - Image Processing: Edge enhancement, image strengthening, image lightening,, reducing darkening, image returning, image retrieval.
 - Image Grey Level: 4096
- Image Max Resolution: 1024 * 1280 pixel
- Image Processing: 24bit for processing real time



- Image storage : Storage 60000 pictures in real time
- Zoom: 2,4,8,16 Times Enlarge, Whole screen continuous observation
- Multi-energetic distinguish objects: organic objects in orange, inorganic objects in blue, mixture in green
- High-energy/low energy: switch from high energy to low energy
- Assist to detect drug and explosive powder

Installation Data

- Operation temperature/Humidity: 0°C-45°C/20%-95%(non-condensing)
- Storage Temperature/Humidity: -20°C-60°C/20%-95%(non-condensing)
- Operation Power: 220VAC(±10%)50±3Hz
- Power Consumption: 1.0 KW (max), 0.3KW(working)
- Noise: <55db

The **HST-T6550** Typical Steel penetration
34mm

General Specification

- Tunnel Size: 650(W)*500(H)mm
- Conveyor Speed: 0.22m/s
- Conveyor Max Load: 170kg
- Dose per Inspection <1.4Gy/h
- Resolution: 32AWG to 40AWG
- Spatial resolution Level: dia1.0mm,
Vertical: dia1.0mm
- Penetrate resolution: 24AWG to 34AWG
- Penetration: 27mm to 40mm Steel
- Film Safety Guarantee ISO1600 Film
- X-ray Leakage: <0.05 μ Gy/h (at a distance of
5cm From external housing)

X-ray Generator

- Generate direct: Upward
- Generate angle: 80 degree
- Anode Voltage: 100~160Kv
- Anode power: 0.4 to 1.2mA
- Cooling / Duty Cycle: Oil Cooling /100%

Image System

- X-ray Sensor: L-Shaped Photodiode Array
(multi-energetic) , 12bit Deep
 - Monitor: High Resolution Color, LCD Accord,
17inch
 - Image Processing: Edge enhancement, image
strengthening, image lightening,, reducing darken-
ing, image returning, image retrieval.
 - Image Grey Level: 4096
- Image Max Resolution: 1024 * 1280 pixel



- Image Processing: 24bit for processing
real time
- Image storage: Storage 60000 pictures
in real time
- Zoom: 2,4,8,16 Times Enlarge, Whole
screen continuous observation
- Multi-energetic distinguish objects :
organic objects in orange, inorganic
objects in blue, mixture in green
- High-energy/low energy: switch from
high energy to low energy
- Assist to detect drug and explosive
powder

Installation Data

- Operation temperature/Humidity: 0°C-
45°C/20%-95%(non-condensing)
- Storage Temperature/Humidity: -20°C-
60°C/20%-95%(non-condensing)
- Operation Power:
220VAC(\pm 10%)50 \pm 3Hz
- Power Consumption: 1.0 KW (max),
0.7KW(working)
- Noise: <58db

The **HST-T8065** Ideal selection for scanning big heavy packages

General Specification

- Tunnel Size: 800(W)*650(H)mm
- Conveyor Speed: 0.22m/s
- Conveyor Max Load: 200kg
- Dose per Inspection <math>< 1.6 \mu\text{Gy/h}</math>
- Resolution: 30AWG to 38AWG
- Spatial resolution: Level: dia1.3mm, Vertical: dia1.0mm
- Penetrate resolution: 24AWG to 34AWG
- Penetration: 27mm to 40mm Steel
- Film Safety: Guarantee ISO1600 Film
- X-ray Leakage: <math>< 0.1 \mu\text{Gy/h}</math> (at a distance of 5cm From external housing)

X-ray Generator

- Generate direct: Downward
- Generate angle: 80 degree
- Anode Voltage: 100~160Kv
- Anode power: 0.4 to 1.2mA
- Cooling / Duty Cycle: Oil Cooling /100%

Image System

- X-ray Sensor: L-Shaped Photodiode Array (multi-energetic) , 12bit Deep
 - Monitor: High Resolution Color, LCD Accord, 17 or 19 inch
 - Image Processing: Edge enhancement, image strengthening, image lightening, reducing darkening, image returning, image retrieval.
 - Image Grey Level: 4096
- Image Max Resolution: 1024 * 1280 pixel



- Image Processing: 24bit for processing real time
- Image storage: Storage 60000 pictures in real time
- Zoom: 2,4,8,16 Times Enlarge, Whole screen continuous observation
- Multi-energetic distinguish objects : organic objects in orange, inorganic objects in blue, mixture in green
- High-energy/low energy: switch from high energy to low energy
- Assist to detect drug and explosive powder

Installation Data

- Operation temperature/Humidity: 0°C-45°C/20%-95%(non-condensing)
- Storage Temperature/Humidity: -20°C-60°C/20%-95%(non-condensing)
- Operation Power: 220VAC(±10%)50±3Hz
- Power Consumption: 1.0 KW (max), 0.9KW(working)
- Noise: <math>< 58\text{db}</math>

The **HST-T10080** scan oversize objects

General Specification

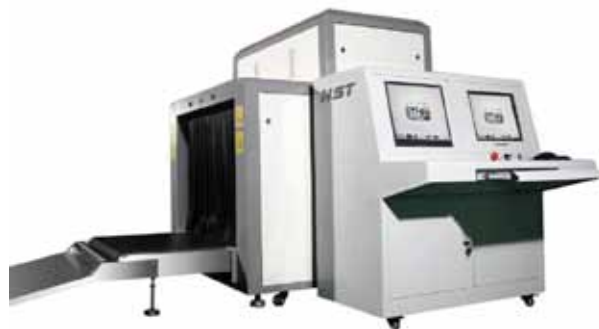
- Tunnel Size: 1000(W)*800(H)mm
- Conveyor Speed: 0.22m/s
- Conveyor Max Load: 200kg
- Dose per Inspection <math>< 1.7 \mu\text{Gy/h}</math>
- Resolution: 30AWG to 38AWG
- Spatial resolution: Level: dia1.3mm, Vertical: dia1.0mm
- Penetrate resolution: 24AWG to 34AWG
- Penetration: 27mm to 40mm Steel
- Film Safety: Guarantee ISO1600 Film
- X-ray Leakage <math>< 0.1 \mu\text{Gy/h}</math> (at a distance of 5cm From external housing)

X-ray Generator

- Generate direct: Downward
- Generate angle: 80 degree
- Anode Voltage: 100~160Kv
- Anode power: 0.4 to 1.2mA
- Cooling / Duty Cycle: Oil Cooling /100%

Image System

- X-ray Sensor: L-Shaped Photodiode Array (multi-energetic) , 12bit Deep
 - Monitor: High Resolution Color, LCD Accord, 17 or 19 inch
 - Image Processing: Edge enhancement, image strengthening, image lightening,, reducing darkening, image returning, image retrieval.
 - Image Grey Level: 4096
- Image Max Resolution: 1024 * 1280 pixel
- Image Processing: 24bit for processing real time



- Image storage: Storage 60000 pictures in real time
- Zoom: 2,4,8,16 Times Enlarge, Whole screen continuous observation
- Multi-energetic distinguish objects: organic objects in orange, inorganic objects in blue, mixture in green
- High-energy/low energy : switch from high energy to low energy
- Assist to detect drug and explosive powder

Installation Data

- Operation temperature/Humidity: 0°C-45°C/20%-95%(non-condensing)
- Storage Temperature/Humidity: -20°C-60°C/20%-95%(non-condensing)
- Operation Power: 220VAC(±10%)50±3Hz
- Power Consumption: 1.0 KW (max), 1.0KW(working)
- Noise: <math>< 58\text{db}</math>

The **HST-T100100** scan oversize objects

General Specification

- Tunnel Size: 1000(W)*1000(H)mm
- Conveyor Speed: 0.22m/s
- Conveyor Max Load: 200kg
- Dose per Inspection < 1.7 μ Gy/h
- Resolution : 30AWG to 38AWG
- Spatial resolution: Level: dia1.3mm, Vertical: dia1.0mm
- Penetrate resolution: 24AWG to 34AWG
- Penetration: 27mm to 38mm Steel
- Film Safety: Guarantee ISO1600 Film
- X-ray Leakage: <0.1 μ Gy/h (at a distance of 5cm From external housing)

X-ray Generator

- Generate direct: Downward
- Generate angle: 80 degree
- Anode Voltage: 100~160Kv
- Anode power: 0.4 to 1.2mA
- Cooling / Duty Cycle: Oil Cooling /100%

Image System

- X-ray Sensor: L-Shaped Photodiode Array (multi-energetic) ,12bit Deep
 - Monitor:High Resolution Color, LCD Accord, 17 or 19 inch
 - Image Processing: Edge enhancement, image strengthening, image lightening,, reducing darkening, image returning, image retrieval.
 - Image Grey Level: 4096
- Image Max Resolution: 1024 * 1280 pixel
- Image Processing: 24bit for processing real time



- Image storage: Storage 60000 pictures in real time
- Zoom: 2,4,8,16 Times Enlarge, Whole screen continuous observation
- Multi-energetic distinguish objects: organic objects in orange, inorganic objects in blue, mixture in green
- High-energy/low energy: switch from high energy to low energy
- Assist to detect drug and explosive powder

Installation Data

- Operation temperature/Humidity: 0°C-45°C/20%-95%(non-condensing)
- Storage Temperature/Humidity: -20°C-60°C/20%-95%(non-condensing)
- Operation Power: 220VAC(\pm 10%)50 \pm 3Hz
- Power Consumption: 1.0 KW (max), 1.0KW(working)
- Noise: <58db



MD-300

Description:

MD-300 metal detector is a mini-type hand held metal detector, it mainly used for the security inspection in those important places, such as: customs, airport and court. It will alarm or vibrate when it detects the metal objects.

Technical Specifications:

1. Power: 9V (6F22) alkaline battery, rechargeable battery
2. Operate Frequency: 22 KHz
3. Operating Temperature: -5°C to +55°C
4. Operate Current: < 50mA
5. Operate Voltage: 7V-9V
6. Indicator Visual: Red / Green LED
7. Sound: Speaker
8. Vibration Control: On/Off Switch; Low sensitivity Switch Sensitivity Adjuster, High Sensitivity 20mm at Pin; 60mm at USD 25 Cent, Low Sensitivity Detector only respond to bigger metal article, Such as a 38Caliber hand gun (35cm), Pen knife (25cm), Razor blade (28cm) etc.
9. Export Packing: 20 Pieces per Carton
10. N.W. / G.W for Carton: 7.8 / 12.6 KG
11. Dimension of Packing: 540 * 330 * 400 mm
12. Dimension of Unit: 370 * 160 * 60 mm
13. Net Weight of Unit: 270 G
14. Color: Black



T2009

Technical Specifications:

Power: 9V (6F22) alkaline battery
Operate Frequency: 25 KHz
Operating Temperature: -5°C to +55°C
Operate Current: < 50mA
Operate Voltage: 7V-9V
Net Weight: 225g/piece
Color: Black
Dimension: 375mm(L)*75mm(W)*35mm(H)
Alarm: Sound & Red LED visual light, or vibration & LED visual light
Optional: Charger

Sensitivity:

High Sensitivity: Pin at 30mm; USD 25 Cent at 75mm
Low Sensitivity: Detector only responds to bigger metal article such as a 64-gun (18cm), 6 inches knife (18cm).

Packing: 30pieces/carton; N.W: 6.75kg/carton; G.W: 14kg/carton
Carton size: 530mm*510mm*290mm
Inner box size: 500mm*95mm*45mm

Key features: Good at anti-shock: no broken if drop to the ground

Key features:

(1). Detection distance:

Pistol: 90mm

Six Inches knife: 60mm

Razor blades: 30mm

Pin: 10mm

(2). Self-calibrating:

digital microprocessor technology eliminates the need for periodic sensitivity adjustments.

(3). Rugged, high-impact ABS case with reinforced coil compartment.

(4). Large 10cm scan surface for quick, thorough scanning.

(5). No tools required to change standard 9V battery.

Optional rechargeable battery kit

(6). Sharp audible alarm and bright red LED light and vibration indicates the detection of metal.

(7). Color LED indication: Green LED power ON indicator; Red LED LOW BATTERY indicator; Red LED ALARM indicator; Green LED RECHARGING indicator.

(8). Adjustable sensitivity knob.

(9). Warranty: 12 months, parts and labor

Dimensions: 41cm (L)* 8cm (w) * 4.2cm (Thick)

Weight: 400g/pc

Packing: 16kgs, 0.1cbm (580mm *340mm *480mm), 25 pieces per paper package.

Applications:

Airports, Sporting Events, Prisons, Nuclear Facilities, Correctional Facilities, Transportation Terminals, Public and Private Buildings, Loss Prevention, Schools, Corporate Security, Stadiums/ Concerts, Historical Landmarks



Accessory :



Belt Holster (Free)



Charger (Optional Accessory)

HST-T-III A

- High sensitivity, economic model
- Suit for Factories and Entertainment environments

Technical specification

- Electric current: AC215V~230V 50/60Hz
- Power: 35W
- Work environment: -20°C~+45°C
- Gross Weight: 95kg
- Outer frame: 2220mm (h) x 820mm (w) X 522mm (d)
- Inner frame: 2000mm (h) X 700mm (w) X 522mm (d)

Characteristic:

- 6 Pinpoint zones to precisely identify multiple target locations from head to toe.
- Advanced broadband detection technology: can detect ferrous and non-ferrous articles.
- Sensitivity adjustable from Level 0 to 99
High: Can detect a clip
Low: Detect big metal articles such as: knife, gun, and copper, aluminums, zinc (more than 150g), ignoring metal in belt button, shoes.
- Shock proof to avoid false alarm
- Sound and light alarm
- Intelligent traffic and alarm counters that calculate traffic flow and resultant alarms.
- Tamper-Proof: operate program is protected by password.
- Adjustable operating frequencies---eliminate the potential effects from X-ray units, radios and other electrical interference sources.
- Mix distance between two Walk-thru: 0.3 meters at low sensitivity, 0.5 meters at high sensitivity
- Harmless to pregnant woman and heart pacemaker
- Warranty: 12 months (parts)



Standards:

- In accordance with: EN60950, WN50081-1, EN50082-1
- CE Certificate; ISO 9001:2000 Certificate
- National standard

Function:

Walkthrough Metal Detector can easily detect weapons, such as knife and gun, and any metal articles which are hidden in human body.

HST-T- IIIC

- High sensitivity, economic model
- Suit for Factories and Entertainment environments

Technical specification

- Electric current: AC215V~230V 50/60Hz
- Power: 35W
- Work environment: -20°C~+45°C
- Gross Weight: 95kg
- Outer frame: 2220mm (h) x 820mm (w) X 522mm (d)
- Inner frame: 2000mm (h) X 700mm (w) X 522mm (d)

Characteristic:

- 6 Pinpoint zones to precisely identify multiple target locations from head to toe.
- Advanced broadband detection technology: can detect ferrous and non-ferrous articles.
- Sensitivity adjustable from Level 0 to 99
High: Can detect a pin
Low: Detect big metal articles such as: knife, gun, and copper, aluminums, zinc (more than 150g), calculate traffic flow and resultant alarms.
- Two LED light bars on both door panels: gives alarm corresponding to the height or human body.
- Tamper-Proof: operate program is protected by password.
- Adjustable operating frequencies---eliminate the potential effects from X-ray units, radios and other electrical interference sources
- Mix distance between two Walk-thru: 0.3 meters at low sensitivity, 0.5 meters at high sensitivity
- Harmless to pregnant woman and heart pacemaker.
- Warranty: 12 months (parts)
- Remote control unit (Optional)

Standards:

- In accordance with: EN60950, WN50081-1,



EN50082-1

- CE Certificate; ISO 9001:2000 Certificate, National standard
- National standard

Function:

Walkthrough Metal Detector can easily detect weapons, such as knife and gun, and any metal article which is hidden in human body.

HST-T-IIID

- Easy to Install, Simple to Operate
- Suitable for Airports, Banks, Embassies, Jail house, Entertainment environments, Gymnasiums, Exhibition Centers etc.

Technical specification

- Electric current: AC215V~230V 50/60Hz
- Power: 35W
- Work environment: -20°C~+45°C
- Gross Weight: 95kg
- Outer frame: 2220mm (h) x 820mm (w) X 610mm (d)
- Inner frame: 2000mm (h) X 700mm (w) X 610mm (d)

Function:

Walkthrough Metal Detector can easily detect weapons, such as knife and gun, and any metal article which is hidden in human body.

Characteristic:

- 6 Pinpoint zones to precisely identify multiple target locations from head to toe.
- Advanced broadband detection technology: can detect ferrous and non-ferrous articles.
- Sensitivity adjustable from Level 0 to 199 (200 levels)
High: Can detect a pin
Low: Detect big metal articles such as: knife, gun, and copper, aluminums, zinc (more than 150g), ignoring metal in belt button, shoes.
- Shock proof to avoid false alarm
- Sound and light alarm
- Intelligent traffic and alarm counters that calculate traffic flow and resultant alarms.
- Four LED light bars on both door panels: gives alarm corresponding to the height or human body.
- Tamper-Proof: operate program is protected by password.
- Adjustable operating frequencies eliminate the



potential effects from X-ray units, radios and other electrical interference sources

- Mix distance between two Walk-thru: 0.3 meters at low sensitivity, 0.5 meters at high sensitivity
- Harmless to pregnant woman and heart pacemaker.
- With Remote controller
- LCD screen show operate steps in English and Chinese
- Superior Versatility: Settings designed for airports, courthouse, Sports meeting, Casino, Electronics factory and Hardware factory.
- Networking: Remote ability with Desktop Remote Control (Optional)

Standards:

- In accordance with: EN60950, WN50081-1, EN50082-1
- CE Certificate; ISO 9001:2000 Certificate / National standard

HST-T300A

- Perfect weather-proofing design for outdoor use.
- Suite for Airports, Banks, Embassies, Jai house, Entertainment environments, Gymnasiums, Exhibition Centers etc.

Technical specification

- Electric current: AC215V~230V 50/60Hz
- Power: 35W
- Work environment: -20°C~+45°C
- Gross Weight: 95kg
- Outer frame: 2220mm (h) x 820mm (w) X 610mm (d)
- Inner frame: 2000mm (h) X 700mm (w) X 610mm (d)

Characteristic:

- 6 Pinpoint zones to precisely identify multiple target locations from head to toe.
- Advanced broadband detection technology: can detect ferrous and Non-ferrous articles.
- Sensitivity adjustable from Level 0 to 99
High: Can detect a pin
Low: Detect big metal articles such as: knife, gun, and copper, aluminums, Zinc (more than 150g), ignoring metal in belt button, shoes.
- Shock proof to avoid false alarm
- Sound and light alarm
- Intelligent traffic and alarm counters that calculate traffic flow and resultant alarms.
- Tamper-Proof: operate program is protected by password.
- Adjustable operating frequencies---eliminate the potential effects from X-ray units, radios and other electrical interference sources
- Mix distance between two Walk-thru: 0.3 meters at low sensitivity, 0.5 meters at high sensitivity
- Harmless to pregnant woman and heart pacemaker.
- Two LED light bars on both door panels: gives



alarm corresponding to the height or human body.

- With remote controller
- Perfect weather-proofing design: Can work in heavy rain.

Standard:

- In accordance with: EN60950, WN50081-1, EN50082-1
- CE Certificate; ISO 9001:2000 Certificate,
- National standard

Function: Walkthrough Metal Detector can easily detect weapons, such as knife and gun, and any metal article which is hidden in human body.

HST-T300B

- Perfect weather-proofing design for outdoor use
- Easy to Install, Simple to Operate

Technical specification

- Electric current: AC215V~230V 50/60Hz
- Power: 35W
- Work environment: -20°C~+45°C
- Gross Weight: 95kg
- Outer frame: 2220mm (h) x 820mm (w) X 610mm (d)
- Inner frame: 2000mm (h) X 700mm (w) X 610mm (d)

Characteristic:

- 6 Pinpoint zones to precisely identify multiple target locations from head to toe.
- Advanced broadband detection technology: can detect ferrous and Non-ferrous articles.
- Sensitivity adjustable from Level 0 to 199
High: Can detect a pin
Low: Detect big metal articles such as: knife, gun, and copper, aluminums, zinc (more than 150g), ignoring metal in belt button, shoes.
- Shock proof to avoid false alarm
- Sound and light alarm
- Tamper-Proof: operate program is protected by password.
- Intelligent traffic and alarm counters that calculate traffic flow and resultant alarms.
- Tamper-Proof: operate program is protected by password.
- Adjustable operating frequencies---eliminate the potential effects from X-ray units, radios and other electrical interference sources
- Mix distance between two Walk-thru: 0.3 meters at low sensitivity, 0.5 meters at high sensitivity
- Harmless to pregnant woman and heart pacemaker.
- Four LED light bars on both door panels: gives alarm corresponding to the height or human body.
- With Remote controller / LCD screen show operate steps in English and Chinese



- Superior Versatility: Settings designed for airports, courthouse, Sports meeting, Casino, Electronics factory and Hardware factory.
- Networking: Remote ability with Desktop Remote Control. (Optional)
- Perfect Water proof design: Can work in heavy rain.

Standard:

- In accordance with: EN60950, WN50081-1, And EN50082-1
- CE Certificate; ISO 9001:2000 Certificate, National standard
- Function: Walkthrough Metal Detector can easily detect weapons, such as knife and gun, and any metal article which is hidden in human body.

HST-T-IIIIX

- Multi zone alarm-6 zone
- DSP technology
- Simplify PCB. Better for installation and after service

Technical specification

- Electric current: AC215V~230V 50/60Hz
- Power: 35W
- Work environment: -10°C~+45°C
- Gross Weight: 71kg
- Outer frame: 2220mm (h) x 820mm (w) X 630mm (d)
- Inner frame: 2000mm (h) X 700mm (w) X 560mm (d)

Characteristic:

- 6 Pinpoint zones to precisely identify multiple target locations from head to toe.
- Synchronous alarm for different zones.
- Advanced broadband detection technology: can detect ferrous and non-ferrous articles.
- Sensitivity adjustable from Level 0 to 99
High: Can detect a coin
Low: Detect big metal articles such as: knife, gun, and copper, aluminums, zinc (more than 150g), ignoring metal in belt button, shoes.
- Shock proof to avoid false alarm
- Sound and light alarm
- Intelligent traffic and alarm counters that calculate traffic flow and resultant alarms.
- Tamper-Proof: operate program is protected by password.
- Adjustable operating frequencies eliminate the potential effects from X-ray units, radios and other electrical interference sources.
- Mix distance between two Walk-thru: 0.4 meters at low sensitivity, 1.0 meters at high sensitivity
- Harmless to pregnant woman and heart pacemaker



Standards:

- In accordance with: NILECJ-0601
- CE Certificate; ISO 9001:2000 Certificate
- National standard

Function:

Walkthrough Metal Detector can easily detect weapons, such as knife and gun, and any metal articles which are hidden in human body.

HST-T-IIIX2

- Multi zone alarm- 6 zone
- DSP technology
- Simplify PCB. Better for installation and after service
- LED light bar for visual alarm

Technical specification

- Electric current: AC215V~230V 50/60Hz
- Power: 35W
- Work environment: -20°C~+45°C
- Gross Weight: 95kg
- Outer frame: 2220mm (h) x 820mm (w) X 522mm (d)
- Inner frame: 2000mm (h) X 700mm (w) X 522mm (d)

Characteristic:

- 6 Pinpoint zones to precisely identify multiple target locations from head to toe.
- Synchronous alarm for different zones.
- Advanced broadband detection technology: can detect ferrous and non-ferrous articles.
- Sensitivity adjustable from Level 0 to99
High: Can detect a pin
Low: Detect big metal articles such as: knife, gun, and copper, aluminums, zinc (more than 150g), ignoring metal in belt button, shoes.
- Shock proof to avoid false alarm
- Sound and light alarm
- Intelligent traffic and alarm counters that calculate traffic flow and resultant alarms.
- Two LED light bars on both door panels: gives alarm corresponding to the height or human body.
- Tamper-Proof: operate program is protected by password.
- Adjustable operating frequencies eliminate the potential effects from X-ray units, radios and other electrical interference sources
- Mix distance between two Walk-thru: 0.4 meters at low sensitivity, 1.0 meters at high sensitivity
- Harmless to pregnant woman and heart pacemaker.



Standards:

- In accordance with: NILECJ-0601
- CE Certificate; ISO 9001:2000 Certificate National standard
Function: Walkthrough Metal Detector can easily detect weapons, such as knife and gun, and any metal articles which are hidden in human body.

HST-T-IIIX12

- Multi zone alarm-12 zone
- DSP technology
- Simplify PCB. Better for installation and after service

- LED light bar for visual alarm

Technical specification

- Electric current: AC215V~230V 50/60Hz
- Power: 35W
- Work environment: -20°C~+45°C
- Gross Weight: 95kg
- Outer frame: 2220mm (h) x 820mm (w) X 522mm (d)
- Inner frame: 2000mm (h) X 700mm (w) X 522mm (d)

Characteristic:

- 12 Pinpoint zones to precisely identify multiple target locations from head to toe & left and right.
- Synchronous alarm for different zones.
- Advanced broadband detection technology: can detect ferrous and non-ferrous articles.
- Sensitivity adjustable from Level 0 to 99
High: Can detect a pin
Low: Detect big metal articles such as: knife, gun, and copper, aluminums, zinc (more than 150g), ignoring metal in belt button, shoes.
- Shock proof to avoid false alarm
- Sound and light alarm
- Intelligent traffic and alarm counters that calculate traffic flow and resultant alarms.
- Two LED light bars on both door panels: gives alarm corresponding to the height or human body.
- Tamper-Proof: operate program is protected by password.
- Adjustable operating frequencies---eliminate the potential effects from X-ray units, radios and other electrical interference sources
- Mix distance between two Walk-thru: 0.4 meters at low sensitivity, 1.0 meters at high sensitivity
- Harmless to pregnant woman and heart pacemaker.



Standards:

- In accordance with: NILECJ-0601
- CE Certificate; ISO 9001:2000 Certificate National standard

Function:

Walkthrough Metal Detector can easily detect weapons, such as knife and gun, and any metal articles which are hidden in human body.

HST-T300X6

- 5.7 inch LCD menu
- Weatherproof (Optional)
- Multi zone alarm-6 zone
- DSP technology
- Simplify PCB. Better for installation and after service

- LED light bar for visual alarm

Technical specification

- Electric current: AC215V~230V 50/60Hz
- Power: 35W
- Work environment: -20°C~+45°C
- Gross Weight: 90kg
- Outer frame: 2220mm (h) x 820mm (w) X 550mm (d)
- Inner frame: 2000mm (h) X 700mm (w) X 550mm (d)

Characteristic:

- 6 Pinpoint zones to precisely identify multiple target locations from head to toe .
- Synchronous alarm for different zones.
- Advanced broadband detection technology: can detect ferrous and non-ferrous articles.
- Sensitivity adjustable from Level 0 to 250
High: Can detect a pin
Low: Detect big metal articles such as: knife, gun, and copper, aluminums, zinc (more than 150g), ignoring metal in belt button, shoes.
- Shock proof to avoid false alarm
- Sound and light alarm
- Intelligent traffic and alarm counters that calculate traffic flow and resultant alarms.
- Two LED light bars on both door panels: gives alarm corresponding to the height or human body.
- Tamper-Proof: operate program is protected by password.
- Adjustable operating frequencies---eliminate the potential effects from X-ray units, radios and other electrical interference sources
- Mix distance between two Walk-thru: 0.4 meters at low sensitivity, 1.0 meters at high sensitivity
- Harmless to pregnant woman and heart



pacemaker.

Standards:

- In accordance with: NILECJ-0601
- CE Certificate; ISO 9001:2000 Certificate National standard

HST-T300X18

- 5.7 inch LCD menu
- Weatherproof (Optional)
- Multi zone alarm--18 zone
- DSP technology
- Simplify PCB. Better for installation and after service

- LED light bar for visual alarm

Technical specification

- Electric current: AC215V~230V 50/60Hz
- Power: 35W
- Work environment: -20°C~+45°C
- Gross Weight: 90kg
- Outer frame: 2220mm (h) x 820mm (w) X 550mm (d)
- Inner frame: 2000mm (h) X 700mm (w) X 550mm (d)

Characteristic:

- 18 Pinpoint zones to precisely identify multiple target locations from head to toe, left & middle & right .
- Synchronous alarm for different zones.
- Advanced broadband detection technology: can detect ferrous and non-ferrous articles.
- Sensitivity adjustable from Level 0 to 250
High: Can detect a pin
Low: Detect big metal articles such as: knife, gun, and copper, aluminums, zinc (more than 150g), ignoring metal in belt button, shoes.
- Shock proof to avoid false alarm
- Sound and light alarm
- Intelligent traffic and alarm counters that calculate traffic flow and resultant alarms.
- Two LED light bars on both door panels: gives alarm corresponding to the height or human body.
- Tamper-Proof: operate program is protected by password.
- Adjustable operating frequencies eliminate the potential effects from X-ray units, radios and other electrical interference sources
- Mix distance between two Walk-thru: 0.4 meters at low sensitivity, 1.0 meters at high sensitivity



- Harmless to pregnant woman and heart pacemaker.

Standards:

- In accordance with: NILECJ-0601
- CE Certificate; ISO 9001:2000 Certificate National standard

HST-T300C

- Multi zone alarm- 8 detect zone, 16 detect zone, 24 zones programmable in software.
- Updated DSP technology
- Simplify PCB. Better for installation and after service
- Automatically Calibration

Technical Specification

- Electric current: 80V to 250V
- Power: 8W
- Work environment: -20°C~+45°C
- Gross Weight: 80kg
- Outer frame: 2220mm (h) x 820mm (w) X 610mm (d)
- Inner frame: 2000mm (h) X 700mm (w) X 610mm (d)

Specification

- High sensitivity, accurate alarm
- Self-diagnostic procedures
- Tell the problem in words
- DSP Digital processing technology
- Input MBSU battery backup, in time power transfer. <Optional>
- 300 sensitivity level adjustable
- Friendly LCD operate interface, local language support.
- Modular structure to easy after service
- Available 100 operate frequency, enable max 100pcs WTMD work side by side.
- Auto Scan environmental interference at site.
- Automatically adapt to the working environment.
- Good performance in anti-interference ability.
- Sound and light alarm
- Calculate traffic flow and resultant alarms
- Tamper-Proof: operate program is protected by password.
- With Remote controller

Other developing function:

- Solar Power



- Network support

Standard:

- In accordance with: EN60950, WN50081-1, And EN50082-1
- CE Certificate; ISO 9001:2000 Certificate, National standard
- Function: Walkthrough Metal Detector can easily detect weapons, such as knife and gun, and any metal article which is hidden in human body.

SECU SCAN Bomb Basket can prevent the horizontal diffusion of shock waves and debris, after bomb blasting. In this way, this bomb dustbin protects surrounding people, valuable instrument, antique, and so on.

- Can bear 1.5kg TNT or equal
- Four casters fixed at the bottom- Convenient to move.
- With inside net to fix the explosive article

Technical specification

Material: Carbon steel (High-strength, impact-resistant, compliant to standard GB700-1988)

Outside diameter: 660mm

Inside diameter: 630mm

Depth: 654mm

Height: 747mm

Bottom thick: 15mm

Cylindrical side thick: 10mm

Ability: Can bear max 1.5kg TNT or equal (After blaster, outside of the basket is complete, no crack)

Net Weight: 270kgs



Inside Net to set bomb

Application attentions:

- Product life: Can only bear blaster once.
- Make sure at last 6 meters upon the bomb basket is clear- nothing exists.
- No building bearing beam, no chandelierhts or any other friable articles up the bomb basket.
- All people should be at least 4 meters away.
- Cover your ears, if you are close to this bomb dustbin.

National Standard:<GA871-2010>

Application: Police, army, court yard, airport, train station, sea port, subway, shopping mall, and all crowded important location.